



Opal X-Press 2 - Basic unit with 1 additional pressing unit P-50



Opal X-Press 4 - Basic unit with 3 additional pressing units P-50

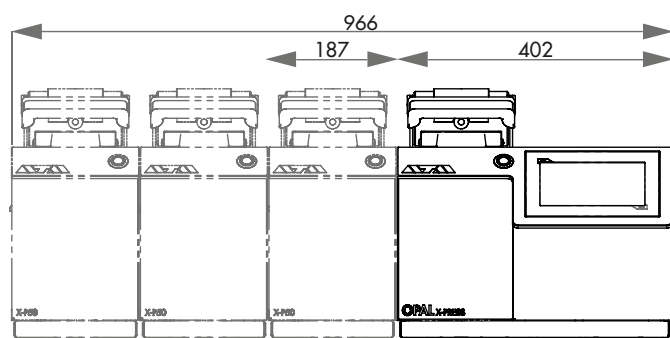
## MODULAR DESIGN

The innovative designed OPAL X-PRESS hot mounting press allows fast and simultaneous mounting of different materialographic specimens.

For specific customer needs concerning different material and sample sizes, the device can be optimally configured by selecting the OPAL X-Press 2 or 4 version.

The basic unit, consisting of control and pressing unit, can be extended as required by 1-3 additional pressing units OPAL P-50.

These units are separated from the basic unit and can also be added later. This allows to generate samples of up to 4 different diameters simultaneously in one modular device.



### OPAL X-PRESS 2 (max. 2 moulds totally)

- » basic unit, consisting of control- and integrated pressing unit
- » extendable with 1 additional pressing unit P50

200 – 240 V, 50/60 Hz

100 – 120 V, 50/60 Hz

Order No.: M0800004

Order No.: M0800005

WxHxD

589x380.7(476.9)x523.2 mm

### OPAL X-PRESS 4 (3-4 moulds totally)

- » basic unit, consisting of control- and integrated pressing unit
- » extendable with up to 3 additional pressing units P50

200 – 240 V, 50/60 Hz

100 – 120 V, 50/60 Hz

Order No.: M0800002

Order No.: M0800003

WxHxD

776-966x380.7(476.9)x523.2 mm

**FAST MOUNTING CYCLE**

The Opal X-Press is designed for fast mounting including a pre-heat function and safes significantly time compared to other hot mounting presses.

**MODULAR DESIGN**

The basic unit can be equipped with up to three additional pressing units (up to 4 moulds in total). The pressing units are separated from the basic unit. This allows adding pressing units on a later date and installing up to four different diameters at a time, combined in one device. The diameter of the mould can be chosen by 25.2 mm, 30 mm, 1 1/4" (~32 mm), 1 1/2" (~38 mm), 40 mm, 50 mm - each diameter with or without chamfer.

**OPAL X-PRESS**

The OPAL X-PRESS is a modular hot mounting press for fast and simultaneously independent mounting of different materialographic specimens. Due to its modularity the OPAL X-PRESS can be configured ideally to the specific customer's needs; e.g. the specimens can differ in size and material.

The 7" touch screen with intuitive software contains user account management, pre-installed recipes and consumable list, user-defined maintenance tasks and more. The device combines fast mounting with lowest power consumption by smart modular control management in a robust powder-coated steel case.

**IMPROVED SLIDING CLOSURE**

For easy operation a single-hand closure system has been evolved. By closing the sliding closure with suction nozzle, excess granulate is transported into a detachable shelf (dirt trap). The closure can be lifted up to clean the upper ram easily. Secure closure is given by self-locking under pressure.

**USER SAFETY**

An integrated exhaust device (Dust Guard) protects the operator from inhaling expired fine dust during filling the moulds with mounting resin.

**EASY TO OPERATE**

The multi-functional button indicates the selected mounting unit, the operation state of the pressing unit and facilitates the operation of the whole unit. The 7" touch display with control software consists of pre-installed mounting methods, consumables and offers the storage of more than 200 user-defined mounting methods. The user account management can be used to set different user accounts with diverse access and operator limits. In addition to that, user-defined maintenance tasks and cooling modes can be edited.



## BASIC MODULE



## OPAL X-PRESS

- » modular hot mounting press
- » basic unit with hydraulic mounting press and control interface for modular extension
- » fast mounting with low power consumption
- » proven one-hand closure system with integrated dirt trap (granular shelf to collect excess granulate) and suction nozzle
- » Dust Guard: removal of fine dust during filling of mold by connected vacuum cleaner
- » 7" touch display with innovative control software
- » high flexibility due to customized preheating function
- » cooling modes
- » maintenance tasks
- » user accounts with definable access rights
- » robust steel construction, powder coated

Basic unit



## OPAL X-PRESS 2

- » basic unit extendable with 1 additional pressing unit (total up to 2 pressing units)

200 – 240 V, 50/60 Hz (1Ph/N/PE)

Order No.: M0800004

100 – 120 V, 50/60 Hz (1Ph/N/PE)

Order No.: M0800005

Opal X-Press 2 -  
Basic unit with 1 additional pressing units P-50

## OPAL X-PRESS 4

- » basic unit extendable with up to 3 additional pressing units (total up to 4 pressing units)

200 – 240 V, 50/60 Hz (1Ph/N/PE)

Order No.: M0800002

100 – 120 V, 50/60 Hz (1Ph/N/PE)

Order No.: M0800003

Opal X-Press 4 -  
Basic unit with 2 additional pressing units P-50

## ACCESSORIES



## PRESSING UNIT P-50

- » additional pressing unit for basic unit
- » mould assemblies available in 6 different sizes
- » with sliding closure

Equipment 1

200 – 240 V, 50/60 Hz (1Ph/N/PE)

Order No.: A0800011

Equipment 2

100 – 120 V, 50/60 Hz (1Ph/N/PE)

Order No.: A0800012



## ACCESSORIES

## MOULD ASSEMBLY



» cylinder, upper and lower ram



## Mould size

Ø 25.2 mm  
 Ø 30 mm  
 Ø 1¼" (~32 mm)  
 Ø 1½" (~38 mm)  
 Ø 40 mm  
 Ø 50 mm

## Equipment 1

200 – 240 V, 50/60 Hz (1Ph/N/PE)

without chamfer

with chamfer

A0800210

A0800220

A0800211

A0800221

A0800213

A0800223

A0800214

A0800224

A0800215

A0800225

A0800216

A0800226

## Equipment 2

100 – 120 V, 50/60 Hz (1Ph/N/PE)

without chamfer

with chamfer

A0800110

A0800120

A0800111

A0800121

A0800113

A0800123

A0800114

A0800124

A0800115

A0800125

A0800116

A0800126

## ACCESSORIES

## VACUUM CLEANER



» extern

230 V/50 Hz (1Ph/N/PE)

Order No.: A0800227

110 V/60 Hz (1Ph/N/PE)

Order No.: A0800228



Motor 0.6 kW

effective  
airflow volume 20 – 200 m³/h

WxHxD 300x510x300 mm

## CONNECTION SET



Order No.: Z0800001

2x pressure tube R ½"; 2 m long

Adapter for ¾"

## ACCESSORIES

## RECIRCULATION COOLING UNIT



## Recirculation cooling unit

» extern

230 V/50 Hz (1Ph/N/PE)

Order No.: A0800233

110 V/60 Hz (1Ph/N/PE)

Order No.: A0800234

Cooling 1.7 kW

Motor 1.4 kW

Flow pressure 5.0 bar

Tank 4 ltr.

WxHxD 235x520x625 mm

## System cooling unit

» Integrated in drawer (21 HT)

230 V/50 Hz (1Ph/N/PE)

Order No.: A0800235

110 V/60 Hz (1Ph/N/PE)

Order No.: A0800236

Cooling 1.7 kW

Motor 1.4 kW

Flow pressure 5.0 bar

Tank 4 ltr.

## SPECIFICATIONS

Mould	Ø 25.2 - 50 mm (6 different sizes)	
Connected load (basic unit)	1.6 kVA	
Connected load (addit. pressing unit)	1.5 kVA	
Power supply	1	220 – 240 V, 50/60 Hz (1Ph/N/PE)
	2	100 – 120 V, 50/60 Hz (1Ph/N/PE)

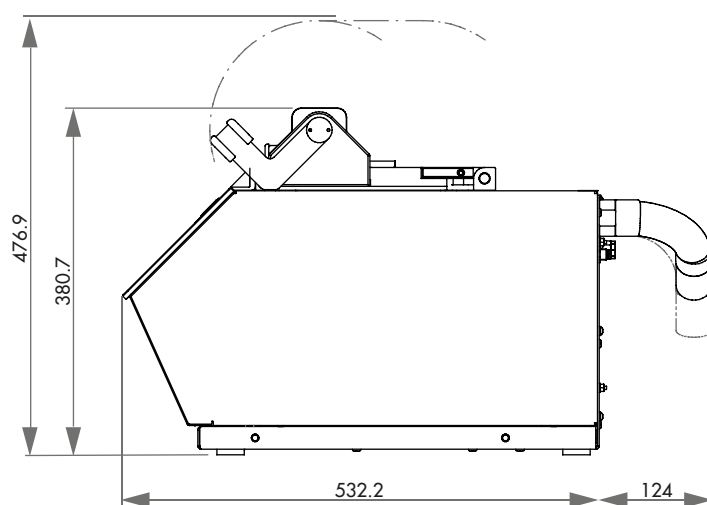
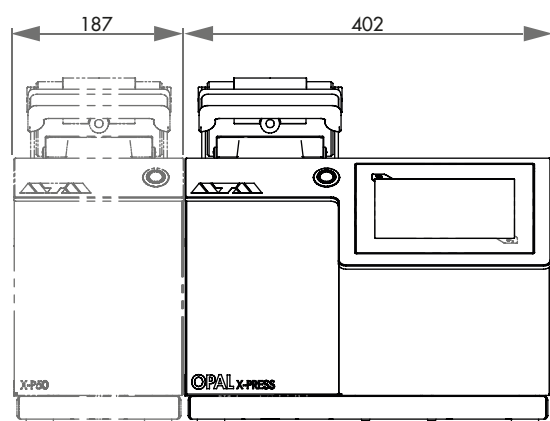
Heating power	1200 W
Temperature range	20 – 200 °C
Heating time	adjustable
Cooling time	adjustable
Max. pressure in mold	250 – 350 bar depending on size

## BASIC UNIT

WxHxD	402x382x536 mm
Weight	~ 50 kg

## ADDITIONAL PRESSING UNIT

WxHxD	187x382x449 mm
Weight	~ 40 kg





# Configuration

Please refer to step 1 - 5

## 1. CHOOSE BASIC UNIT

### Opal X-Press 2

200 – 240 V, 50/60 Hz  
Order No.: M0800004

100 – 120 V, 50/60 Hz  
Order No.: M0800005

### Opal X-Press 4

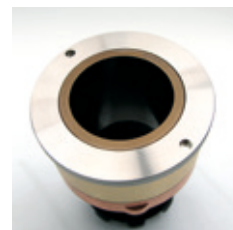
200 – 240 V, 50/60 Hz  
Order No.: M0800002

100 – 120 V, 50/60 Hz  
Order No.: M0800003



## 2. CHOOSE MOULD ASSEMBLY FOR BASIC UNIT

	200 – 240 V, 50/60 Hz		100 – 120 V, 50/60 Hz	
Mould size	without chamfer	with chamfer	without chamfer	with chamfer
Ø 25.2 mm	A0800210	A0800220	A0800110	A0800120
Ø 30 mm	A0800211	A0800221	A0800111	A0800121
Ø 1¼" (~32 mm)	A0800213	A0800223	A0800113	A0800123
Ø 1½" (~38 mm)	A0800214	A0800224	A0800114	A0800124
Ø 40 mm	A0800215	A0800225	A0800115	A0800125
Ø 50 mm	A0800216	A0800226	A0800116	A0800126



## 3. ADD CONNECTION SET

Order No.: Z0800001

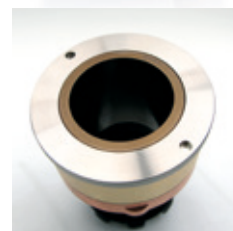
## 4. CHOOSE ADDITIONAL PRESSING UNIT P-50

Note correct voltage 200 – 240 V, 50/60 Hz  
Order No.: A0800011

100 – 120 V, 50/60 Hz  
Order No.: A0800012

## 5. CHOOSE MOULD ASSEMBLY FOR BASIC UNIT

	200 – 240 V, 50/60 Hz		100 – 120 V, 50/60 Hz	
Mould size	without chamfer	with chamfer	without chamfer	with chamfer
Ø 25.2 mm	A0800210	A0800220	A0800110	A0800120
Ø 30 mm	A0800211	A0800221	A0800111	A0800121
Ø 1¼" (~32 mm)	A0800213	A0800223	A0800113	A0800123
Ø 1½" (~38 mm)	A0800214	A0800224	A0800114	A0800124
Ø 40 mm	A0800215	A0800225	A0800115	A0800125
Ø 50 mm	A0800216	A0800226	A0800116	A0800126



For OPAL X-PRESS 4: repeat step 3, 4 + 5 if necessary