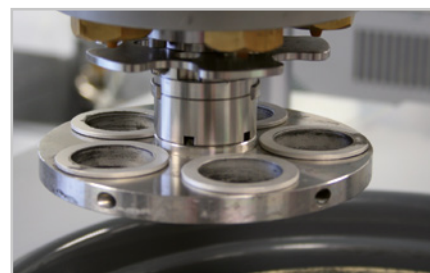


VARIABLE SPEED

The variable speed of the working wheel is set at the control panel of the grinding and polishing head Rubin 500.

The speed can also be changed during the working sequence.



ELECTRONIC CONTROL

The control panel is designed to be especially robust. All parameters can be changed at the control knob. The logical design makes operation easy.



Grinder and polisher

Saphir 530

The SAPHIR 530 is a twin wheel grinder and polisher with top-mounted grinding and polishing head Rubin 500 for working wheels Ø 200 - 250 mm.

This unit will convince you best of all through its easy operation and wide range of possibilities. Sequence time, down-pressure,

controlled speed, rotational direction, pneumatic lowering, single and central pressure as well as program saving and a few things more are all available.

Additionally, there are all the advantages of the Saphir 330, a machine with impressive characteristics.



WATER

The water supply is switched manually. The rinsing tap can be pulled out for cleaning the basin with the hose extension.

Optimum distribution of water can be reached by swinging the tap left and right across the diameter of the working wheel.



BASIC MODULE

SAPHIR 530



Order No.: M5630040

- » twin wheel grinder/polisher with Rubin 500 head
- » single and central pressure
- » variable speed
- » electronic control with LC display
- » programmable memory
- » polishing head: clockwise/anti-clockwise rotation
- » pneumatic height adjustment
- » manual swivelling sideways
- » automatic water solenoid
- » basin rinsing
- » incl. splashing ring and cover
- » aluminium case, powder coated
- » impact proof plastic bowl
- » e-Lab ready

EQUIPMENT

POWER SUPPLY



Equipment 1

230 V/50 Hz (1Ph/N/PE)

Order No.: A5630007

Equipment 2

110 V/60 Hz (1Ph/N/PE)

Order No.: A5630008

ACCESSORIES

DOSING UNIT TOPAS 130



Order No.: M6300040

- » automatic dosing unit for 3x diamond suspension and 1x lubricant
- » variable dosing
- » reverse rinsing function
- » manual or automatic function

WxHxD approx. 180x240x195 mm

POWER SUPPLY



Equipment 1

230 V/50 Hz (1Ph/N/PE)

Order No.: A6300001

Equipment 2

110 V/60 Hz (1Ph/N/PE)

Order No.: A6300002

HOLDER FOR DOSING NOZZLES

Order No.: A6300003

- » for automatic mode with Topas 130



ACCESSORIES

SETTLING TANK



» 2-chamber-compartment, 45 ltr.

» inlet sieve and filter bag



for System lab cabinet
(insertion mechanism)

referring height of System cabinet

H 800 mm

Order No.: A5810261

H 900 mm

Order No.: A5810237



mobile

Order No.: A5800496

CONNECTION SET



Order No.: Z5600009

1 drain tube	Ø 40 mm; 1.5 m
1 pressure tube	R 1/2"; 2 m
1 pressure tube	R 3/8" coupling and screw thread; 3 m

SPECIFICATIONS

Connected load	1.8 kVA
Power supply	1 230 V/50 Hz (1Ph/N/PE)
	2 110 V/60 Hz (1Ph/N/PE)

SAPHIR 530

Working wheel	Ø 200 – 250 mm
Speed	50 – 600 rpm

RUBIN 500

Single pressure	1 – 5 samples, Ø 40 mm
Central pressure	depends on sample holder
Speed	140 rpm

Pressure	variable
Single pressure	5 – 100 N
Central pressure	20 – 350 N

WxHxD approx.	760 x 475 – 555 x 620 mm
Weight	67 kg

