

Force gauge attachment

IMADA CO., LTD. 1/2

Large Flat Heads/A-40,60 S-40,60

Ideal for general push/crush testing

**[Application]**

The large flat head is installed on the Imada's force gauge for compression test of various test pieces.

The head is suitable for the crush test of tablet or polyethylene terephthalate bottles.

[Feature]

The large flat head is light and suitable for measuring minute force.

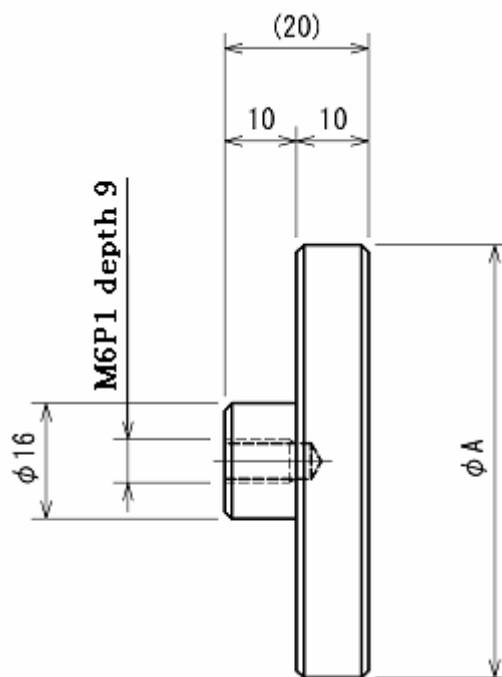
(A-40, 60 : Aluminum)

2003/11/26

[Specifications]

	A-40	A-60	S-40	S-60
Outer diameter[A]	Diameter 40mm	Diameter 60mm	Diameter 40mm	Diameter 60mm
Material	Aluminum		Steel	
Capacity	200N		500N	
Mounting screw	M6 P1			
Dimension	Refer to the dimensional drawing			
Weight	38 g	84 g	110 g	238 g
Recommended force gauge	PS/FB/DPS/DPX/DPZ series			
	From 4.9N	From 9.8N	From 19.8N	From 29.4N

[Dimensional drawing]



[Precaution]

- Combining with Imada's test stand, more stable measuring becomes possible.
- All information is subject to change without prior notice

2003/11/26

Compression Test Jig / SQ-5000, PC-5000, SP-5000 Series**Variety of shape for compression test**

SP-5000 series



PC-5000 series



SQ-5000 series

[Applications]

The compression test jigs are installed on the Imada's force gauge for compression test of various test pieces.

[Feature]

Since a head can be shaken in the range of 15 degrees of front and rear, right and left, it can be adhered to a sample.

According to a usage, the compression tips of various form can be replaced by magnet adoption. (SQ-5000 & PC-5000 series)

2003/10/27

[Specifications]

Common

Capacity	5000 N
Mounting screws	M10 P1.5

SQ Series (Square)

Model	SQ-5030	SQ-5075	SQ-5150
Board attachment part	M5Nut	32mm diameter (Magnet)	32mm diameter (Magnet)
Measurement (W×D×H)	30×20×(35) mm	75×50×(31) mm	150×100×(31) mm
Weight	65 g	500 g	1560 g

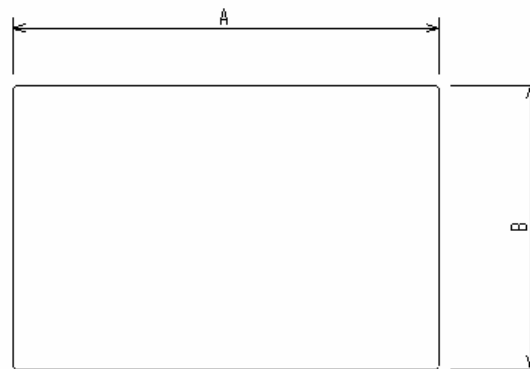
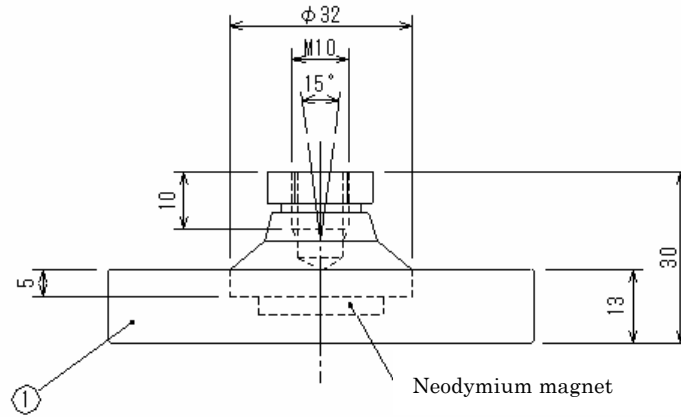
PC Series (Column)

Model	PC-5040	PC-5060	PC-5100
Board attachment part	32mm diameter (Magnet)	32mm diameter (Magnet)	32mm diameter (Magnet)
Measurement(W×D×H)	40mm diameter ×(31)mm	60mm diameter ×(31)mm	100mm diameter ×(31)mm
Weight	160 g	330 g	820 g

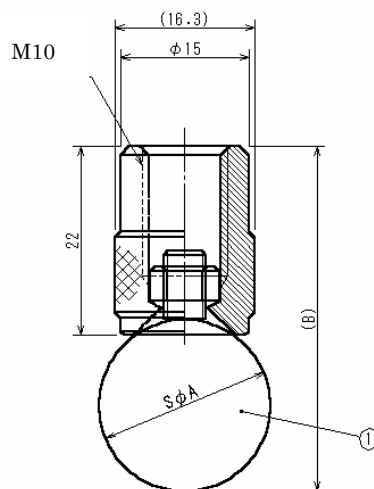
SP Series (Sphere)

Model	SP-5010	SP-5020	SP-5030
Board attachment part	M5(Nut)	M5(Nut)	M5(Nut)
Measurement(W×D×H)	S10mm diameter ×(30)mm	S20mm diameter ×(40)mm	S30mm diameter ×(50)mm
Weight	26 g	55 g	135 g

2003/10/27



SQ-5000 series



SP-5000 series

[Note]

- Particular materials and shape can not be used.
- Combining with Imada's test stand, more stable measuring becomes possible.
- All information is subject to change without prior notice.

2003/10/27

Urethane spherical compression jig UR-8S/UR-8M

Urethane made, spherical shaped jig for compression test.
It is close to the sense that a person operates something.
2 levels of hardness are available.



UR series



Combined with a force gauge



Camera shutter button feeling test

Features

Urethane-made has merits like...

- Ideal for switch feeling testing since it is close to the sense of operation by human.
- Suitable for final inspection since the soft material reduces the damage of samples.

Specifications

	UR-8S	UR-8M
Model	UR-8S	UR-8M
Capacity *1	50N (5kgf)	50N (5kgf)
Weight	Approx. 5.4g	Approx. 5.2g
Hardness	Shore A50	Shore A70
	Eraser like hardness	Rubber ball for baseball like hardness

* It is NOT suitable for capacitive touch screens since it does not respond.



*1 It is capacity of this jig. Please be careful for overload when you use force gauges whose capacities are under 50N.

=Made-to-Order=

We offer special size, material, hardness, etc to suit your demand as custom-made.

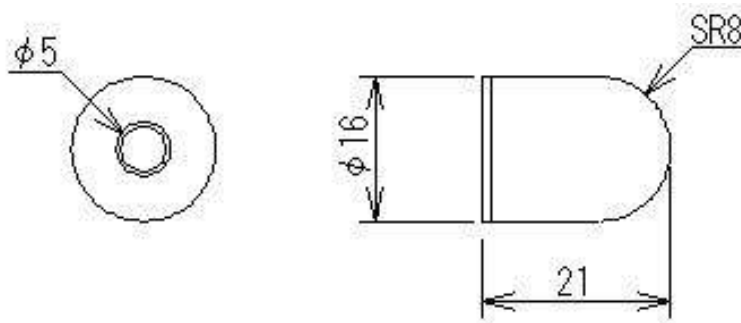
Please feel free to contact us.

IMADA CO.,LTD.
Urethane hemisphere compression jig

Related products		
Pin gauge PG series	Compression jig A/S series	Spherical compression jig SQ series
		

[Dimensions]

UR-8S /8M



Thread of a force gauge is inserted into the hole (φ5) of the jig.

[Caution]

- The contents may be changed without previous notice.
- All of products are designed for measurement purpose only.
- Do not copy and use this content without authority.

Please feel free to contact us for measurement solutions, distributor's information in your country, etc.

TEL: +81-(0)532-33-3288
Email: info@forcegauge.net

2013/02/08

Penetrating Pin Gauges / PG series

Ideal gauges for checking hardness
of clay-like materials

**[Application]**

The penetrating pin gauges are installed on the Imada's force gauge for compression test of various test pieces.

[Feature]

They are suitable for checking hardness of clay-like materials.

The penetrating pin gauges are light and suitable for measuring minute force.

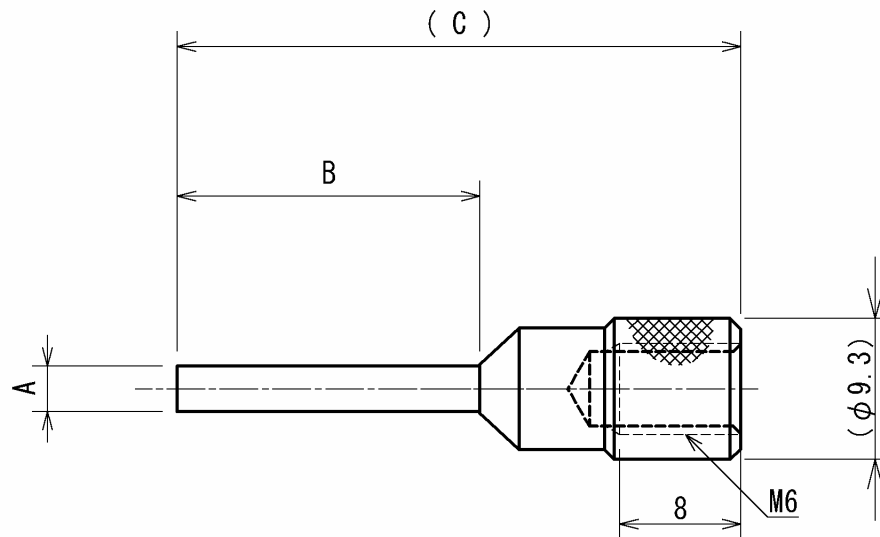
They can be used in a small area.

2003/11/26

[Specifications]

	PG-2	PG-3	PG-4	PG-5
Rod diameter	Diameter 2mm	Diameter 3mm	Diameter 4mm	Diameter 5mm
Capacity	100N		200N	
Mounting screw	M6 P1			
Dimension	Refer to the drawing below.			
Weight	2 g	3 g	4 g	5 g
Recommended force gauge	PS/FB/DPS/DPX/DPZ series 2.4N to 500N			

[Dimensional drawing]



Model	Diameter A	B	(C)
PG-2	Diameter 2	20	(38)
PG-3	Diameter 3		(37)
PG-4	Diameter 4		(36)
PG-5	Diameter 5		(35)

Unit : mm

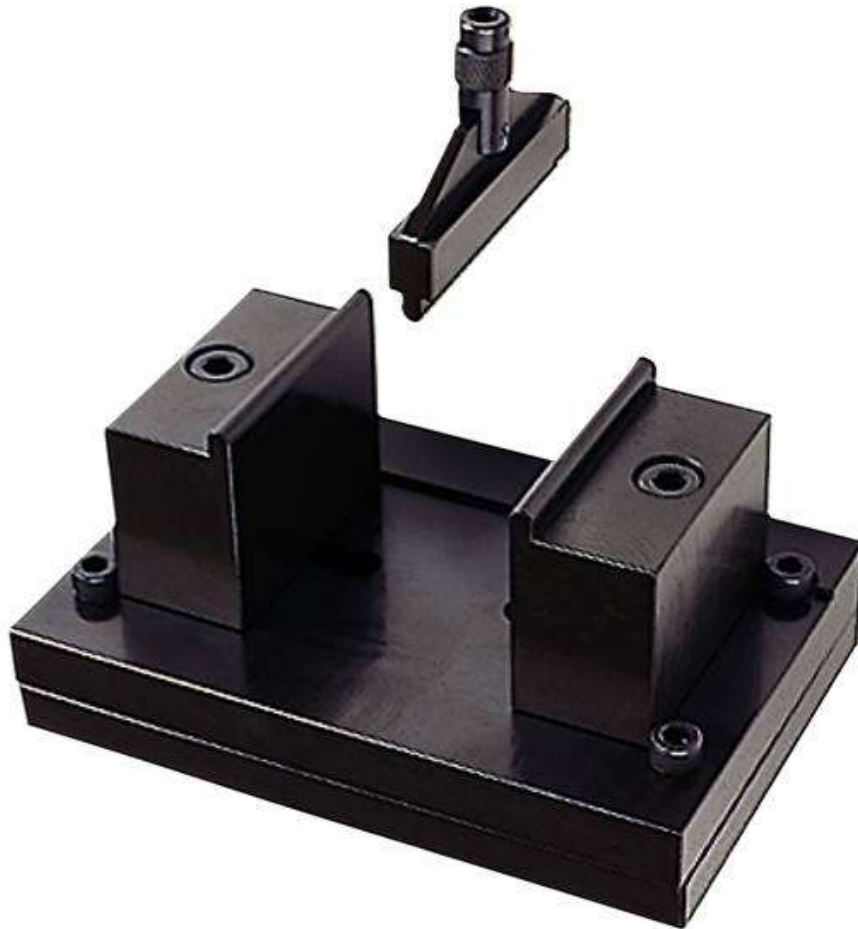
[Precaution]

- Combining with Imada's test stand, more stable measuring becomes possible.
- All information is subject to change without prior notice.

2003/11/26

Bend Test Stand / GA-10N, 5000N

For bend, compression test



[Applications]

The bend test stand is installed on the Imada's force gauge for compression test of various test pieces.

[Feature]

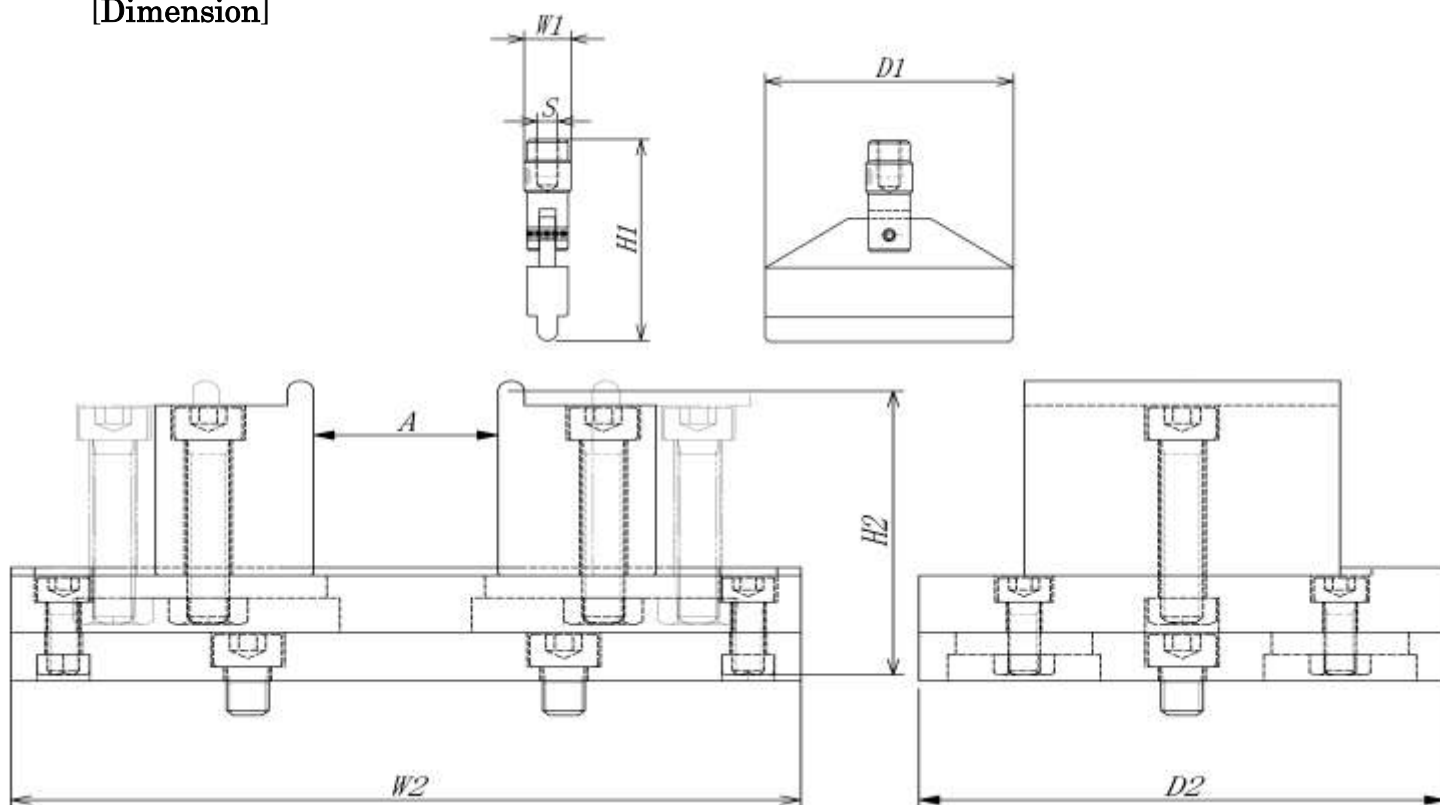
They are suitable for checking for bend, compression test.

2013/11/7

[Specifications]

	<i>GA-10N</i>	<i>GA-5000N</i>
Model	Normal	High Capacity
Capacity	500N	5000N
Mounting Screws[S]	M6P1	M10P1.5
Weight (Upper)	100 g	120 g
Weight (Bottom)	4100 g	4200 g
Dimension (W1×H1×D1) (W2×H2×D2)	11.5×49×60mm 150×74×100mm	16.5×50×60mm 150×69×100mm
Opening width [A]	5~60 mm	5~70mm
With Force Gauge	PS/FB/DPS/DPX/DPZ 20N~500N	PSH/DPSH/DPZH 20N~2000N

[Dimension]










[Note]

2013/11/7






- Particular materials and shape can not be used.
- Combining with Imada's test stand, more stable measuring becomes possible.
- All information is subject to change without prior notice.

Fixture for film sticking test (Pin & Table) TKS series

TKS series are ideal for sticking strength tests of thin samples such as film. This fixture is an integral component of testing system, so please use it with IMADA force gauges and test stands to carry out the test.

Standard type:TKS-250N		Low cost type for low-load: TKS-20N	
Ideal for sticking strength test of such as liquid crystal film, cover film of automobile battery, thin aluminum, PET bottle, and so on.		Ideal for sticking strength test of thinner film such as retort pouch.	
Capacity: 250N		Capacity: 20N	
Pin: TP-20	Table: TTB-20	Pin-vice: TP-10	Table: TTB-10
			
Sticking test of PET bottle with TKS-250N		Sticking test of film with TKS-20N	
			
Feature		Feature	
	The rubber ring holds samples firmly	More affordable type for low-load measurement up to 20N	
With testing system on P2, measurement according to JIS Z1707 [General rules of plastic films for food packaging] is possible.			1 / 4 4/23/2014

[Recommended testing system]

Pin	Table	Force gauge	Test stand	Connection cable
				
TP-20/10	TTB-20/10	ZTA(ZTS)series	MX2series	CB-518

*With the testing system above, it stops operation before force over capacity is added to prevent sensor break-down. (We cannot assure the perfect prevention against sensor break-down.)

*Please select the appropriate ranges of force gauges and test stands.



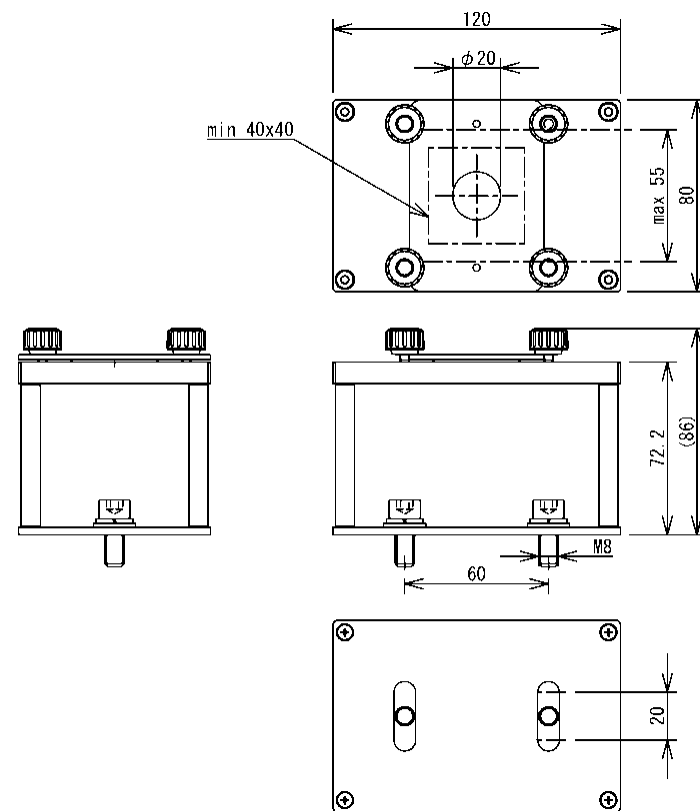
[Detail of Table]

[Specifications]

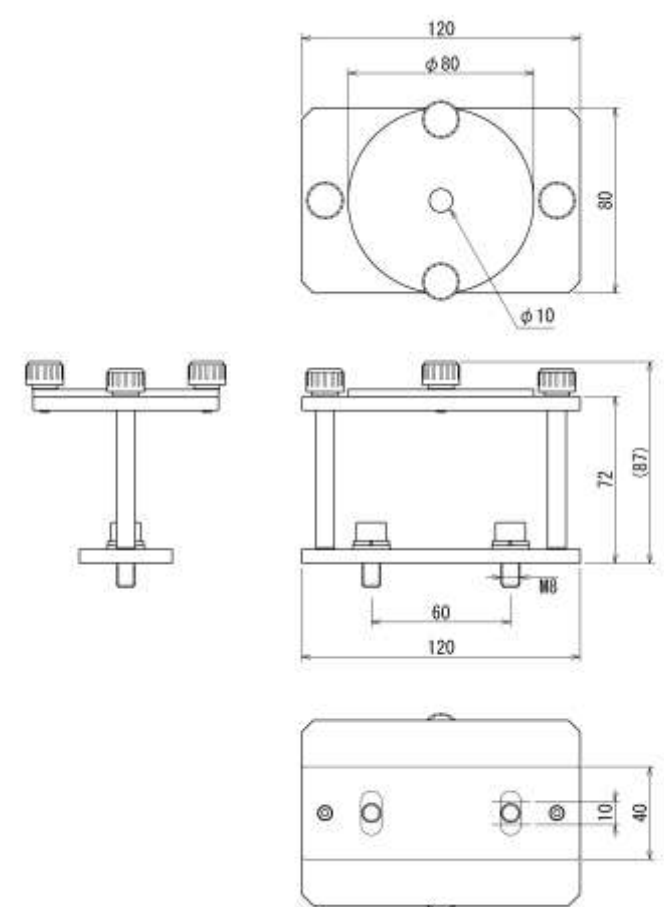
	Table for TKS-250N	Table for TKS-20N
Capacity	250N	20N
Diameter of a hole	φ2 mm *	φ10 mm *
Weight	Approx.1050g	Approx.500g

*Diameter is changeable, so please contact us for more detail.

[Dimensions of Table for TKS-250N]



[Dimensions of Table for TKS-20N]



(Unit:mm)

[Detail of Pin]

IMADA CO., LTD.
Optional attachment TKS series

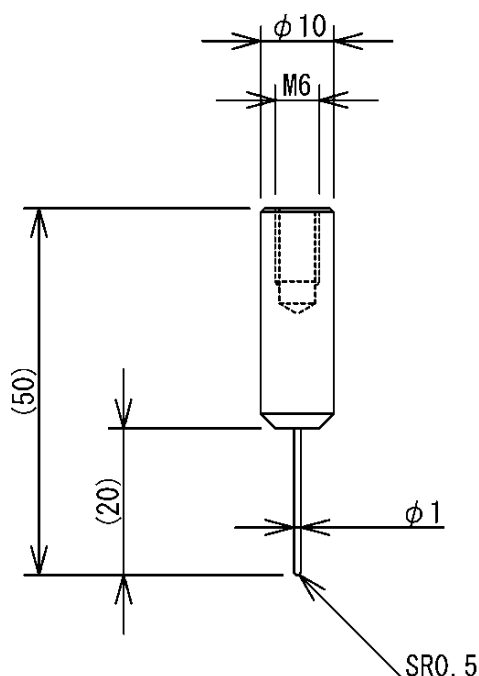
[Specifications]

		Pin for TKS-250N	Pin for TKS-20N
Pin	Capacity	250N	20N
	Diameter	φ1	φ1
	Length	20	30
	Point	SR0.5	SR0.5
	Material	Steel	Stainless
	Weight	Approx.16g	Approx.0.2g
Pin vice	Available in diameter to grip	—	φ0-3.2mm
	Weight	—	Approx.22g

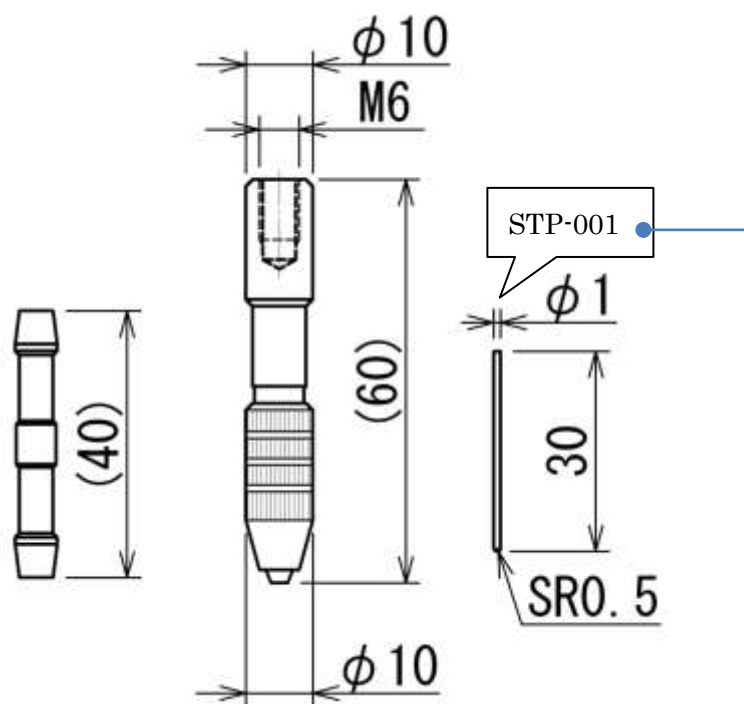
*Pin is likely to be broken or bent when offset load is added.

*2 spare pins are included when you purchase TKS-20N.

[Dimensions of Pin for TKS-250N]



[Dimensions of Pin for TKS-20N]



(Unit:mm)

[Pin for replacement]



You can purchase only pin parts for replacement.

Model	Explanation
TP-20	Pin for TKS-250N
TP-10	3 pcs of the pins for TKS-20N and pin vice.*
STP-001	3 pcs of the pins for TKS-20N.*

* We cannot sell from 1pcs of pin.

3 / 4
4/23/2014

[Related products]

Press fixture PR-500N/2500N	90 degree peeling fixture P90-200N
<p>Durability test of retort pouch with PR series</p> 	<p>90 degree peeling test of tape with P90-200N</p> 

*Force gauges, test stands, optional attachments are sold separately.

[Caution]

- The contents may be changed without previous notice.
- All of products are designed for measurement purpose only.
- Force gauges and test stands are not included but necessary to carry out tests.
- Some samples cannot be measured depending on their materials or shapes.
- Do not copy and use this content without authority.

Please feel free to contact us for measurement solutions, distributor's information in your country, and so on.

TEL: +81-(0)532-33-3288
Email: info@forcegauge.net

4 / 4
4/23/2014

Fixture for Compression Testing PR-500N/2500N

Combined with a motorized test stand and a force gauge,
it is suitable for compression testing on such as retort pouch, heat seal packaging and so on.



PR-500N



PR-2500N

[Application]







Compression testing on retort pouch
(According to JISZ0238)



Compression testing on corrugated cardboard





The test method below is possible, combined with recommended test stand and force gauge on next page.

Measurement according to **JIS Z0238**[Testing methods for heat sealed flexible packages] is possible.
(Keep compressing for over one minute with over 400N)





			
With one dial	Repetition Test	Durability Test	Prevention against sensor break-down
<ul style="list-style-type: none"> - Speed adjustment - Set-up the number of test cycles - Settings for time to compress - Fine adjustment of a force gauge's position 	<p>Select the number of test cycles from 1 to 65535 times and the test stand will continue to run to specified times.</p>	<p>Set up pausing time and the test stand will keep adding force for specified time.</p> <p style="text-align: right;">1 / 3 2012/7/06</p>	<p>It stops operation before force over capacity is added, combining with Z series force gauge and its cable. *Optional cable is necessary. *We cannot assure the perfect prevention against sensor break-down</p>

[The recommended combination]

Measurement up to 500N]

Attachment	Force gauge	Test stand	Cable
			
PR-500N	ZP(Z2) series	MX2-500N/1000N	CB-704

Measurement up to 2500N

Attachment	Force gauge	Test stand	Cable
			
PR-2500N	ZPH(Z2H) series	MX2-1000N/2500N	CB-704

*The combinations above make it possible to keep adding force for specified time and perform a specific number of test cycles.*Please select ranges of a force gauge and a test stand appropriate for your sample.



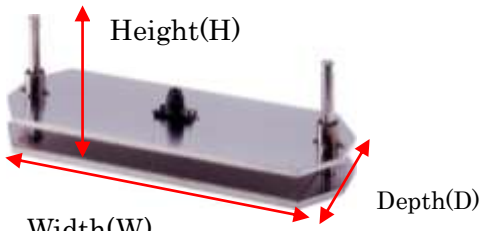
[Specifications]

Model	PR-500N	PR-2500N	PR-○○N-□□□
Capacity *1	500N	2500N	500N or 2500N
Size	W260×D120×H156(mm)	W280×D140×H159(mm)	Size can be customized.(*2)
Sample maximum size	W194×D120×H105(mm)	W200×D140×H105(mm)	
Weight	Upper	Approx. 0.9kg	—
	Lower	Approx. 1kg	—
Recommended force gauge	ZP(Z2)-500N/1000N	ZPH(Z2H)-2000N/5000N	—
Screws to mount a force gauge	M6	M10	M6 or M10
Recommended test stand	MX2-500N/1000N	MX2-1000N/2500N	—

*1Capacity depends on the range of a force gauge used together.

*2 Specification could be different according to size change.

We customize according to your sample.



The model after size change (width 400mm extension)

PR-○○N-W400

↑ ↑

Range suitable for your sample Width(W) and the size you need


Depthchange: D Height change: H

2 / 3
2012/7/06

IMADA CO.,LTD.

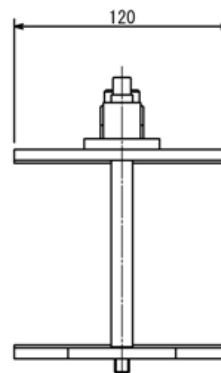
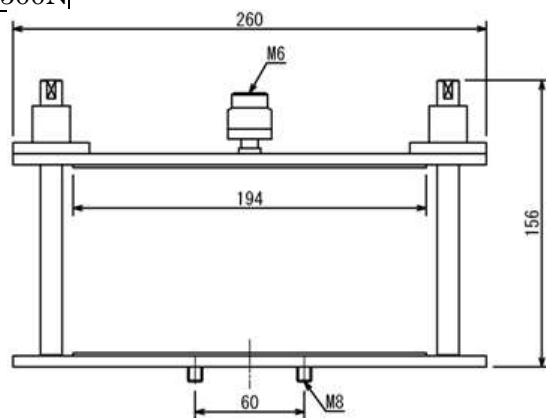
Fixture for compression testing: PR series

[Option]

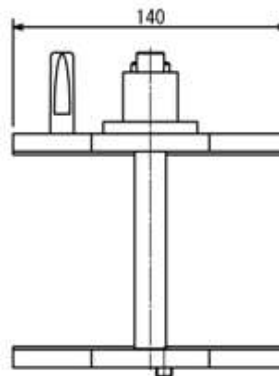
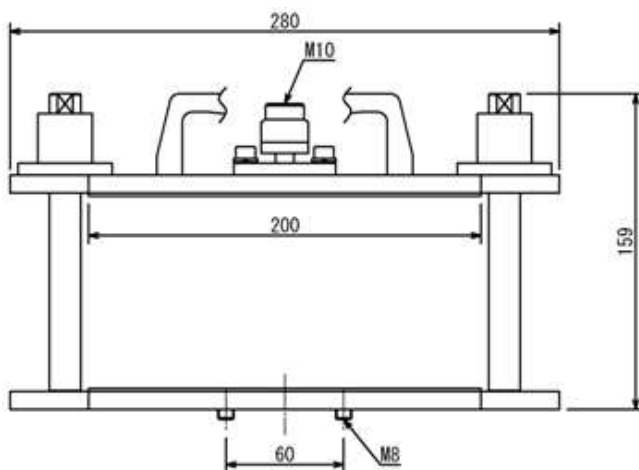
Anti-scattering panel	Purpose
	<p>It prevents sample scattering.</p>

[Dimensions]

PR-500N



PR-2500N



[Cautions]

- The contents may be changed without prior notice.
- A force gauge, a motorized test stand and a cable are necessary for force measurement with PR series.
- These products are designed for force measurement only. Do not use it for other purpose.
- Do not copy and use the contents without authority.