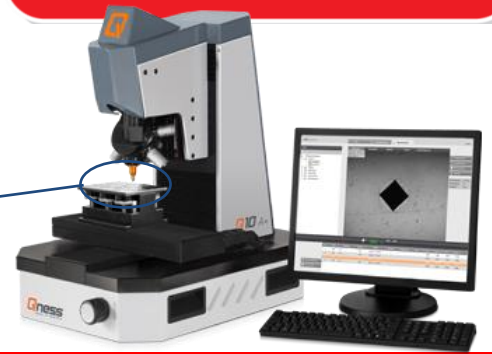
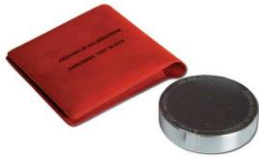


Patrones de Dureza

Con Certificado UKAS (United Kingdom Accreditation Service)



| TIPO / ESCALA | VALOR NOMINAL | | | | | | | | | | | | Dimensión | Superficie | PRECIO |
|--|---------------|-----|-----|-----|-----|-----|-----|-----|-----|-----|-----|-----------|----------------|-------------|-------------|
| Rockwell | | | | | | | | | | | | | | | |
| HRC | 20 | 25 | 30 | 35 | 40 | 45 | 50 | 55 | 60 | 63 | 65 | 67 | Ø 64 x 15 | Espejo | 331€ |
| HRA (Férrico) | 60 | 63 | 65 | 68 | 70 | 73 | 76 | 78 | 81 | 83 | 84 | 85 | | | |
| HRA (No Férrico) | 22 | 26 | 31 | 35 | 40 | 45 | 47 | 50 | 53 | 55 | 59 | 62 | | | |
| HRB | 20 | 30 | 40 | 50 | 60 | 70 | 75 | 80 | 85 | 90 | 95 | 100 | | | |
| HRE | 75 | 81 | 87 | 93 | 100 | | | | | | | | | | |
| Otras Escalas | HRD | HRF | HRG | HRH | HRK | HRL | HRR | HRP | HRS | HRV | | | | | |
| Rockwell Superficial | | | | | | | | | | | | | | | |
| HR15N | 69 | 72 | 75 | 78 | 81 | 83 | 85 | 88 | 90 | 91 | 92 | 93 | Ø 64 x 15 | Espejo | 331€ |
| HR30N | 41 | 46 | 50 | 55 | 59 | 64 | 68 | 73 | 77 | 80 | 82 | 83 | | | |
| HR45N | 19 | 25 | 31 | 37 | 43 | 49 | 55 | 61 | 66 | 70 | 72 | 74 | | | |
| HR15T | 67 | 70 | 73 | 77 | 80 | 83 | 85 | 86 | 88 | 90 | 91 | 93 | | | |
| HR30T | 29 | 36 | 43 | 49 | 56 | 63 | 66 | 69 | 73 | 76 | 80 | 83 | | | |
| HR45T | 2 | 12 | 22 | 32 | 43 | 48 | 53 | 58 | 63 | 68 | 73 | | | | |
| MacroVickers | | | | | | | | | | | | | | | |
| HV2, HV3, HV5, HV10, HV20, HV30, HV50, HV100 | | | | | | | | | | | | Ø 64 x 15 | Espejo | 555€ | |
| Valores Nominales disponibles para cada escala: | | | | | | | | | | | | | | | |
| 40 | 70 | 100 | 150 | 200 | 250 | 300 | 350 | 400 | 450 | 500 | 550 | | | | |
| 600 | 650 | 700 | 750 | 800 | 850 | 900 | 950 | | | | | | | | |
| MicroVickers | | | | | | | | | | | | | | | |
| HV0.01, HV0.025, HV0.05, HV0.1, HV0.2, HV0.3, HV0.5, HV1 | | | | | | | | | | | | Ø 30 x 10 | Espejo | 695€ | |
| Valores Nominales disponibles para cada escala: | | | | | | | | | | | | | | | |
| 40 | 70 | 100 | 150 | 200 | 250 | 300 | 350 | 400 | 450 | 500 | 550 | | | | |
| 600 | 650 | 700 | 750 | 800 | 850 | 900 | 950 | | | | | | | | |
| Brinell | | | | | | | | | | | | | | | |
| HBW 5 / 250 | 70 | 100 | 150 | 170 | 200 | | | | | | | | 150 x 125 x 16 | Pulida | 550€ |
| HBW 5 / 750 | 100 | 150 | 200 | 250 | 300 | 350 | 400 | 450 | 500 | 550 | 600 | 650 | | | |
| HBW 10 / 500 | 70 | 100 | | | | | | | | | | | | | |
| HBW 10 / 1000 | 70 | 100 | 150 | 170 | 200 | | | | | | | | | | |
| HBW 10 / 1500 | 70 | 100 | 150 | 170 | 200 | 250 | 300 | | | | | | | | |
| HBW 10 / 3000 | 100 | 150 | 200 | 250 | 300 | 350 | 400 | 450 | 500 | 550 | 600 | 650 | | | |
| HBW 1 / 2.5 | 40 | | | | | | | | | | | | Ø 64 x 15 | Pulida | 397€ |
| HBW 1 / 5 | 40 | 70 | 100 | | | | | | | | | | | | |
| HBW 1 / 10 | 40 | 70 | 100 | 150 | 170 | 200 | | | | | | | | | |
| HBW 1 / 30 | 100 | 150 | 170 | 200 | 250 | 300 | 350 | 400 | 450 | 500 | 550 | 600 | | | |
| HBW 2.5 / 15.625 | 40 | | | | | | | | | | | | | | |
| HBW 2.5 / 31.25 | 40 | 70 | 100 | | | | | | | | | | | | |
| HBW 2.5 / 62.5 | 40 | 70 | 100 | 150 | 170 | 200 | | | | | | | | | |
| HBW 2.5 / 187.5 | 100 | 150 | 170 | 200 | 250 | 300 | 350 | 400 | 450 | 500 | 550 | 600 | | | |
| HBW 5 / 62.5 | 40 | | | | | | | | | | | | | | |
| HBW 5 / 125 | 40 | 70 | 100 | | | | | | | | | | | | |

NOTA Indique Escala y Valor Nominal que le interese. Para otras escalas y/o valores nominales, consúltenos.

Rev.0

Los valores nominales indicados son aproximados. En el certificado se indica el valor nominal del patrón suministrado (media obtenida durante la calibración).

Los patrones marcados en amarillo están fabricados en aluminio. El resto son de acero.

Si interesa que vengan con cuadrícula normalizada de acotamiento de huella, añadir 40€ al precio del patrón (No disponible en Microvickers).

IVA (21%) no incluido en P.V.P. Portes en Factura (10€) o Debidos indicando transportista.

La validez de uso recomendada del patrón es de 5 años.

NEURTEK S.L. SE RESERVA EL DERECHO DE MODIFICACIÓN SIN PREVIO AVISO. Precios válidos hasta 31/12/2023