

NEURTEK

i n s t r u m e n t s

QUALITY CONTROL INSTRUMENTS FOR COATINGS



PHYSICAL PAINT TEST

ELECTRONIC ADHESION TESTER KN-10

ISO 4624, ASTM D4541

Enables exact, numerical adhesion values of the coating to be obtained directly on the load scale, avoiding the subjectivity of visual methods.

Scales: kgf and kg/cm² (for Ø20 and 50 mm dollies).

Range: from 5 to 1,000 kgf.
(10 KN, 300 kg/cm², 30 MPa).
1 kgf resolution.



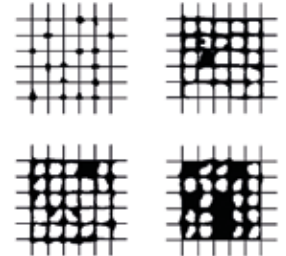
CROSS CUT ADHESION TESTER

ISO 2409, ASTM D3359, DIN 53151

The most popular gauge used to determine coating adhesion, ideal for flat surfaces.

Change blades using allen key.

Each cutter wheel consists of 8 cutting faces. When one face becomes worn out, rotate the cutting wheel to the next face. Available with three different cutter spacings 1, 2 and 3mm for a range of coating thickness.



CUPPING TESTER



Revolutionary apparatus for testing the resistance of coatings at various stages of deformation in accordance with ISO 1520.

The built-in gear-box minimizes the manual force which is required to deform the test panel, allowing user to perform a smooth deformation. The degree of deformation is digitally displayed a resolution of 0.01 mm.

Integrated rotatory handle.

Mandatory test in Qualicoat, QIB and GSB accredited laboratories.

IMPACT TESTER

ISO 6272, ASTM D2794

In order to test a sample in accordance with a specified standard, a number of kits have been created. The aim is to provide a single Impact Tester which allows the user to work through the appropriate kit, in accordance with a wide range of National and International Standards.

- **CYLINDRICAL AND CONICAL BEND MANDREL**



HARDNESS TEST



ISO 15184, ASTM D3363

Pencil Hardness Tester according Wolff Wilborn uses the varying hardness values of graphite pencils to evaluate a coating's hardness.

Cylindrical pencil lead is maintained at a constant angle of 45° and exerts a force of 7.5N. Delivered with pencils and sharpener.

- **PERSOZ + KÖNIG PENDULUM HARDNESS TEST**

ABRASION AND WEAR

UNE 48250, ISO 5470-1...

The Taber Rotary Platform Abraser (Abrader) is used to perform accelerated wear testing. Samples are mounted on a rotating turntable, and subjected to the wearing action of two abrasive wheels applied at a specific pressure.



PAINT CONTROL

VISCOSITY CUPS

For easy and practical measuring of the viscosity of paints, inks, lacquers and other liquids. 100 ml capacity, manufactured in anodized aluminium with stainless steel nozzle insert for increased durability.

- ISO** (ISO 2431)
- FORD** (ASTM D1200-94)
- DIN** (DIN 53211-85)
- Zhan** (ASTM 4212-93)



FILM APPLICATORS

Produced in high grade stainless steel. Applicators are not be affected by acid or base elements. They can be used with both manual and automatic film applicators.

ATX, Authomatic Film Applicator compact equipment that accepts charts up to A4 size. Application speed can be set form 40 to 200 mm/seg.



Authomatic Film Applicator



Quadruplex



Universal Baker



Baker



Bird



Spiral bars

TEST CHARTS

LENETA contrast or test charts.
NEURTEK contrast or test charts.



2A



2DX



5C



WDX



B/N



Blanca



Cebra



B/N



PYCNOMETERS - DENSITY



To determine the specific gravity of paints, inks, pastes, adhesives, etc. Produced in high grade of stainless steel .

GRINDOMETER



Hegman and Precision grindometers used to determine the degree of grinding (grain of particle size) of paints, lacquers, varnishes, inks, etc. Manufactured out of hardened stainless Steel AISI 420, rusk-proof, each gauge is graduated in microns.

RESISTIVITY METER



Indispensable for the correct operation of electrostatic painting facilities and for achieving paint saving and minimal paint waste. The instrument has an internal Auto scaling, which allows measurement of all ranges of resistivity.

TEMPERATURE - HUMIDITY

THERMOMETER AND THERMO-HYGROMETER

CONCRETE MOISTURE METER

Concrete Moisture meters are ideal for rapid testing of large concrete floors or constructions which have to be painted or where (wooden) floorings are being installed.



CLIMATIC CONDITION

Lightweight easy to use, ergonomic, 4 in 1 design allows one-handed operation to measure moisture on and below the surface as well as ambient air humidity. Inbuilt infrared thermometer. °C, %RH.



DATALOGGER

Inexpensive Datalogger for Temperature and Humidity control. Interchangeable probe, real time display and datalogging. Data analysis software included.



pH - CONDUCTIVITY

pH - CONDUCTIVITY METERS



Portable water-proof pH meter for water, paint, inks, stripping pretreatment, cleaning and phosphating. Conductivity meter for pretreatment baths control, HVAC, wastewater and reverse osmosis.

LABORATORY MULTI pHMETER



Edge Tablet based multiparameter instrument (pH, Conductivity, Dissolved Oxygen) with large easy-to-read LCD and datalogging capabilities.

KARL FISCHER TITRATOR



Humidity or water content measurement values.

- Volumetric Titrator from 100 ppm to 100%.
- Coulometric Titrator from 1 ppm to 5%.

LABORATORY EQUIPMENT

BALANCES



OVENS

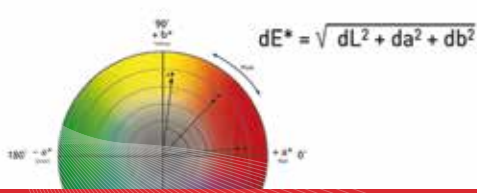


CORROSION CHAMBER



SIKKENS SCRATCHING TOOL





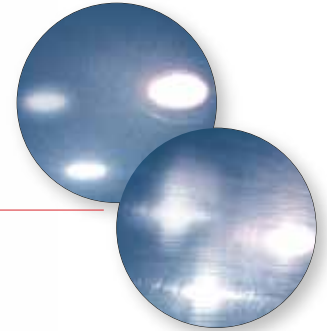
COLOR - GLOSS - APPEARANCE

COLOR

Color control instruments for laboratory, production, receipt of materials, suppliers, customers and shops. Portable and laboratory spectrophotometers for color measuring on coatings, liquid and powder samples. Color comparison booth for visual control.



RHOPOINT
INSTRUMENTS



COLOR CHARTS

RAL



GLOSS, OPACITY and HAZE

60° and 20/60/85° Glossmeters. Gloss, Haze, DOI - Orange Peel.

RETROREFLECTOMETERS

For signs and road markings.



THICKNESS

FILM THICKNESS GAUGE

Rugged, fully electronic coating thickness gauges use magnetic, eddy current and ultrasound principles to measure coating thickness on ferrous, non-ferrous metals, plastic, concrete, etc accurately and quickly. Interchangeable probes to convert instrument into a dew point meter, surface profiler. See below.



TAILOR-MADE INSPECTION TOOLKIT



Select the equipment you need to configure your own inspection toolkit.

Probes:



Replica Tape Reader



°C, %RH, Dew Point Meter

Surface Profile Gauge



Ultrasonic wall Thickness Gauge

Coating Thickness, metallic substrates



Coating Thickness, non-metallic substrates



Wet film thickness comb



Cross cut adherence test

Bresle kit chloride test



Coating Quality Control Instruments

Since 1979

- Thickness
- Adherence
- Abrasion
- Impact
- Viscosity
- Color
- Gloss
- Corrosion
- Humidity
- Temperature
- Paints and coatings

Manufacturer

Design and Production in Europe.

First / Best trademarks

Official distributors of well known international trademarks.

Calibration and Certification ENAC / ISO17025

Equivalent to UKAS Spain, COFRACC, DKD, UKAS, NIST.

Application consultancy

Highly qualified personnel to find a solution to your application.



SGI 1954138



NEURTEK, a great team working for you.